

# — TITAS —

AUTUMN / WINTER 2016 / 2017

TAIPEI, TAIWAN | OCTOBER 19-21 2015

TITAS brings the latest in innovation, with technology, fashion and comfort being the driving factors in textiles development.

# OVERVIEW

A concise message of performance, eco-awareness and fashion for textiles is delivered at the 19th annual Taipei Innovative Textile Application Show, with some 790 booths from 370 exhibitors coming from Taiwan, China, Germany, India, Japan, Singapore, South Korea, Sweden, Switzerland and the USA.

Exhibitors address the issues of function and fashion in an array of innovations while also meeting global demand for more ecofriendly solutions and sustainable textiles.

Odour control and moisture management are two of the most prominent trends in performance innovation at the show. Compositions combining natural and synthetic fibres address issues of comfort and durability while the functions and properties of natural fibres such as wool, linen and Tencel are also promoted.

Ecofriendly solutions to note include a water-free dyeing technique, alongside recycled fibres, recycled oil and natural fibre innovation.

Next show dates: October 17-19 2016, Taipei World Trade Center Nangang Exhibition Hall



Formosa Plastic Group



Formosa Plastic Group



Formosa Plastic Group



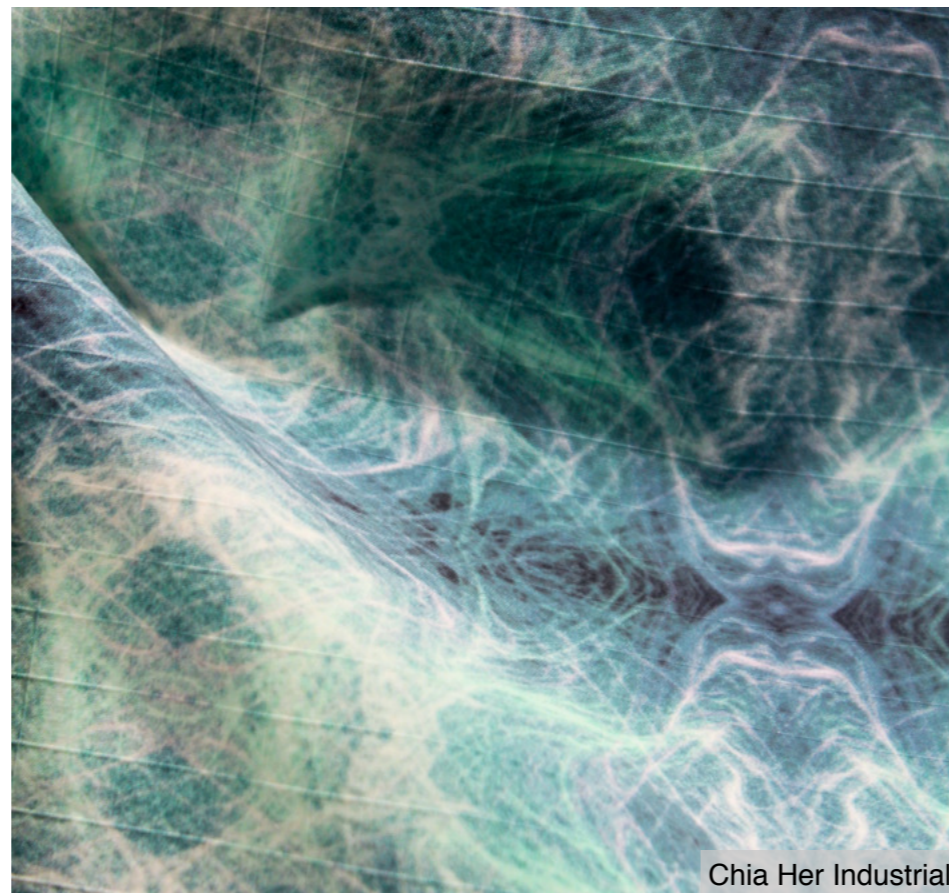
TITAS



T&A Textile Co. Ltd



iFabrix Taiwan Co.



Chia Her Industrial

# TREND CHECKLIST

- **Technology & Innovation:** temperature control and odour reduction in textiles are key areas of development at the A/W 16/17 edition of TITAS. Ceramic and aluminium particles function as heat conductors, while water-reducing technology and moisture management for fabrics are important alongside a focus on sustainability
- **Sophistication:** applications of embroideries, trim materials, reflective aspects and suitings have a refined touch, making tech and sustainable textiles more fashion-friendly
- **Tactility:** through embossed, bonded or jacquard techniques, surfaces are highly textural and luxurious to the touch
- **Opulent Treatments:** rich surfaces created with embroidery, print and embellishments with textured novelty yarns layer into one
- **Prints:** whether inky and aquatic, or graphic and architectural, three-dimensional surfaces are created with various digital print techniques, as well as flocking and textile layering

“

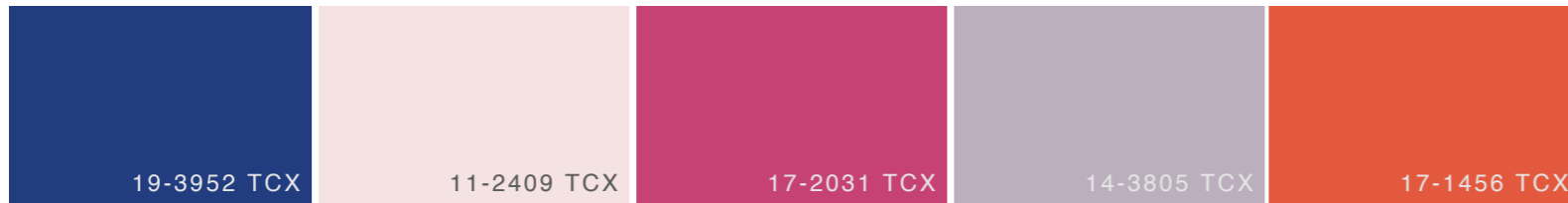
FASHION AND FUNCTION ARE SET TO A HIGH STANDARD AT TITAS. LIGHTWEIGHT FABRICS HAVE MULTIPLE PROPERTIES INCLUDING ANTIMICROBICS, TEMPERATURE CONTROL, WATERPROOF AND WINDPROOF FEATURES, WITH ECOFRIENDLY AND SUSTAINABLE CREDENTIALS. COMPOSITION IS SHIFTING TOWARDS MORE NATURAL FIBRES FOR MAXIMUM DURABILITY, PERFORMANCE AND COMFORT.

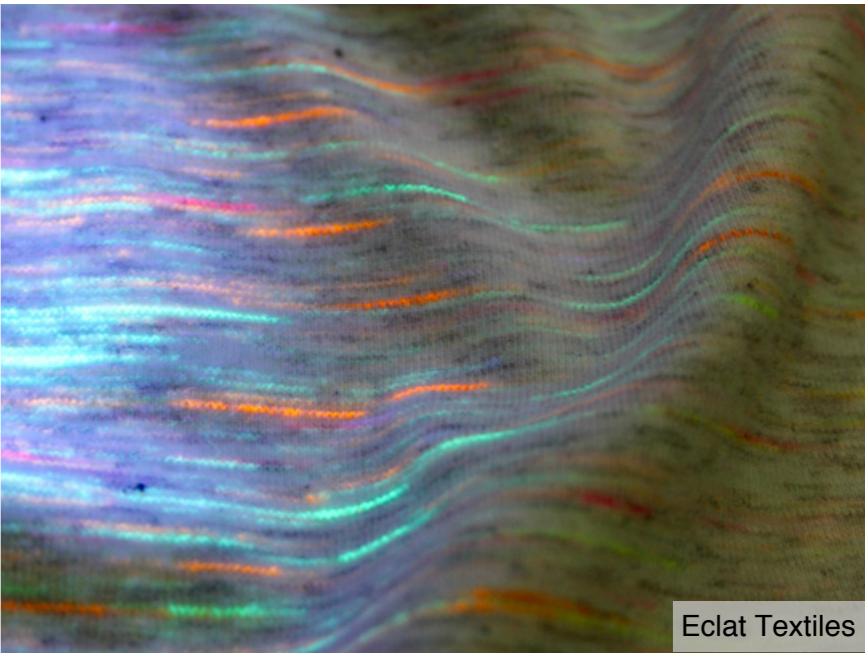
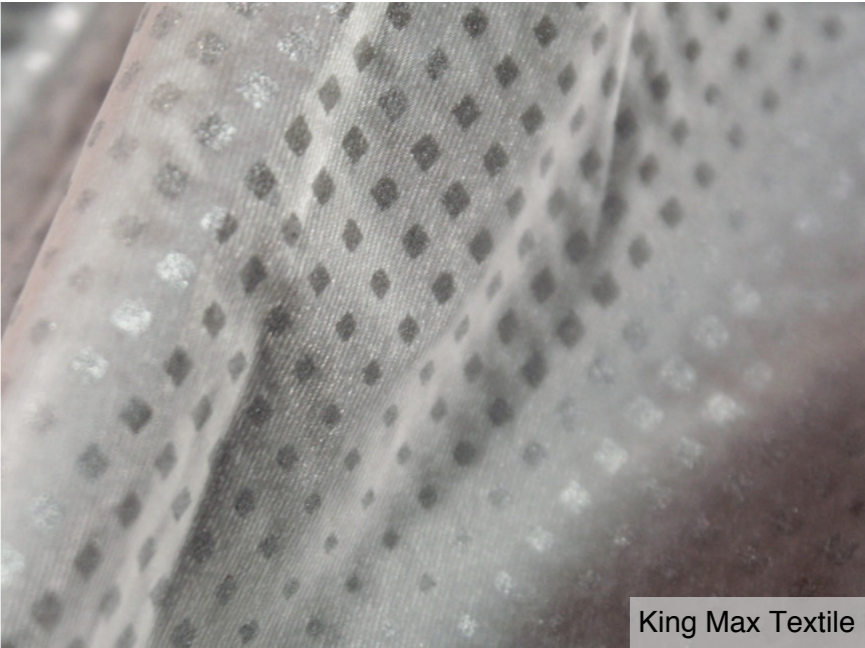
”

**Sarah Armstrong,**  
Textiles Contributor, WGSN

# COLOURS

---





# REFLECTIVE SURFACE & FINISH

Coated metallic surfaces evolve for A/W 16/17 with silvery or holographic coatings on technical fabrics highlighting micro quilting, perforations or figured surface effects. Micro textured surfaces from polyester to cotton are enhanced through silvered PU coatings or special reflective yarns. Reflective particles are woven into textiles, printed onto surfaces, or coloured with dye pigment to function.



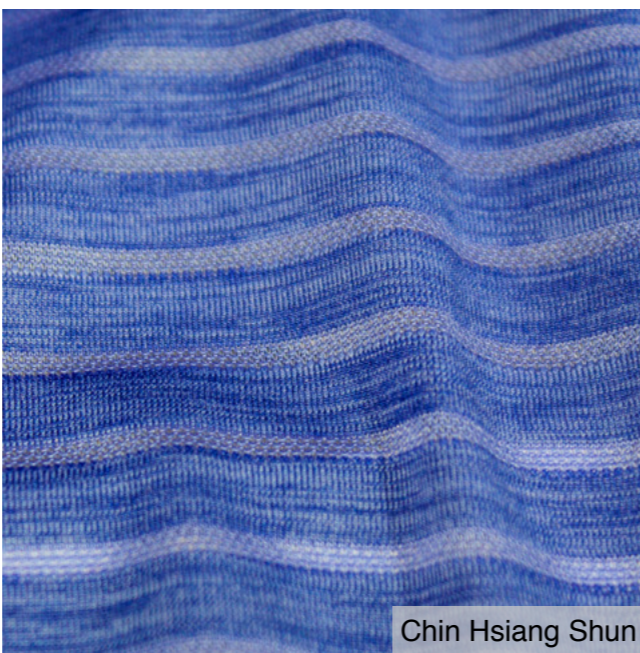
Loongchin Textile Co



Loongchin Textile Co



Loongchin Textile Co



Chin Hsiang Shun



Sunny Special Dyeing & Finishing Co.



Loongchin Textile Co

# LIGHTWEIGHTS CONSTRUCTION

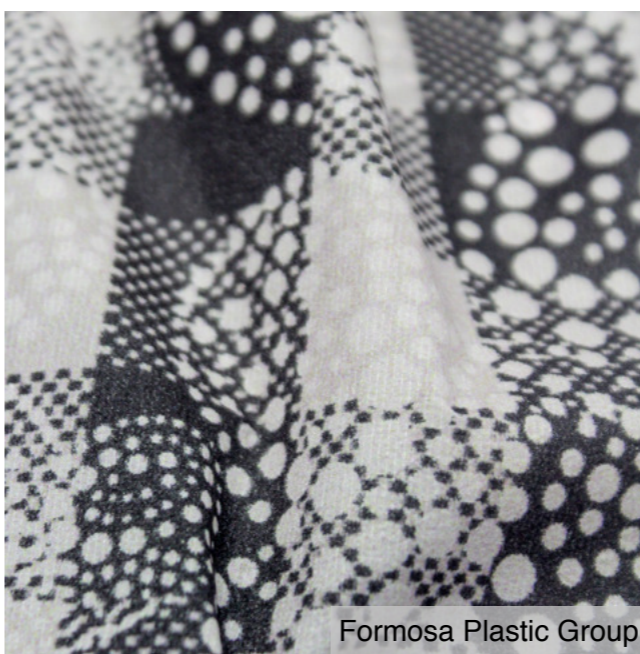
Lightweight textiles for the performancewear sector function as windproof, waterproof, heat-retaining and moisture-reducing while also possessing reflective properties. Lightweight synthetics such as polypropylene-based fabrics are important for moisture management and are 100% biodegradable, with production that is low-energy and has low water-usage.



Formosa Plastic Group



Asakure-Senpu Co. Ltd



Formosa Plastic Group



New Wide Group



Tex Tile Enterprise



Formosa Plastic Group

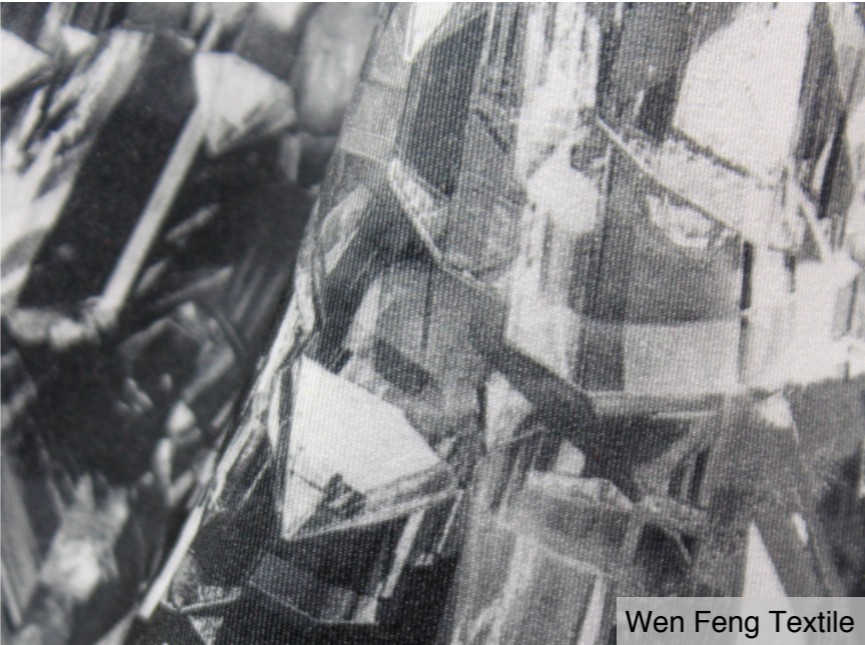
# MODERN CHECKS

PRINT & PATTERN

Checks and plaids take a more contemporary and colourful direction for A/W 16/17, with added motifs, layers and print finishes. Painterly effects layered on performancewear are feminine, while jacquard houndstooth is combined with stripes for additional texture, suitable for skiwear and outdoor wear with a focus on a more fashionable direction.



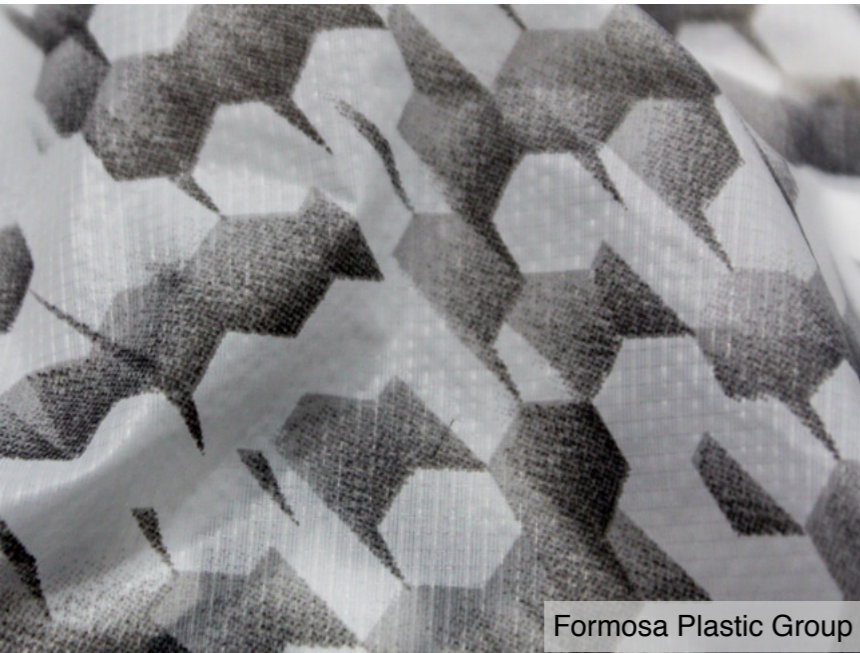
Formosa Plastic Group



Wen Feng Textile



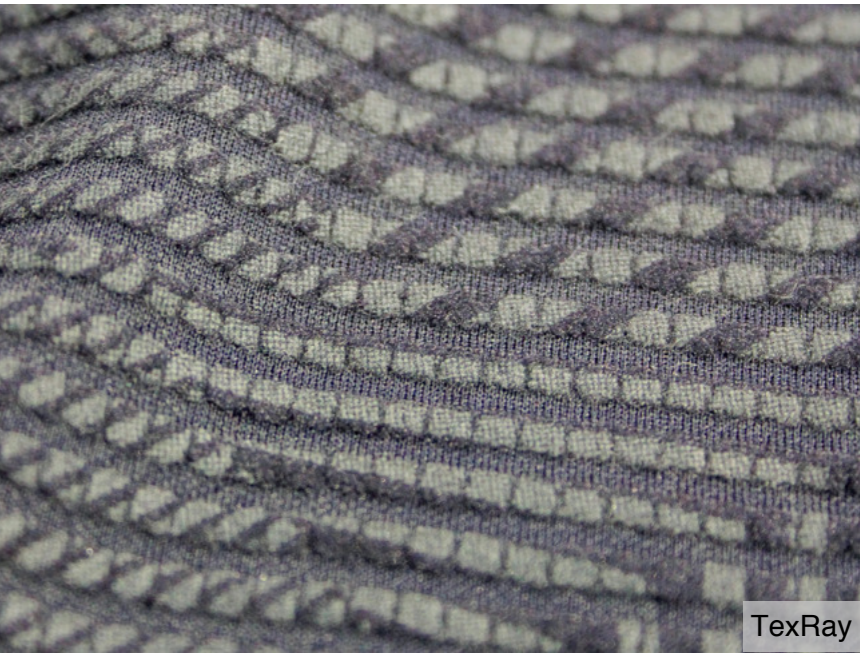
New Wide Group



Formosa Plastic Group



Liberty Tex



TexRay

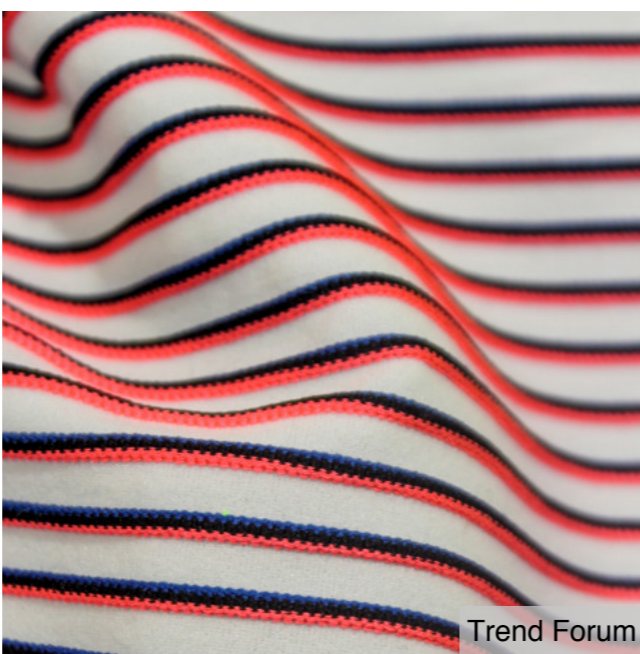
# OPTICAL ILLUSIONS PRINT & PATTERN

Digital print technology is enhanced with lightweight double-layer prints, flocking and subtle jacquards to create three-dimensional effects for A/W 16/17 – a key update for outdoor sports nylon outerwear and down jackets for the season.

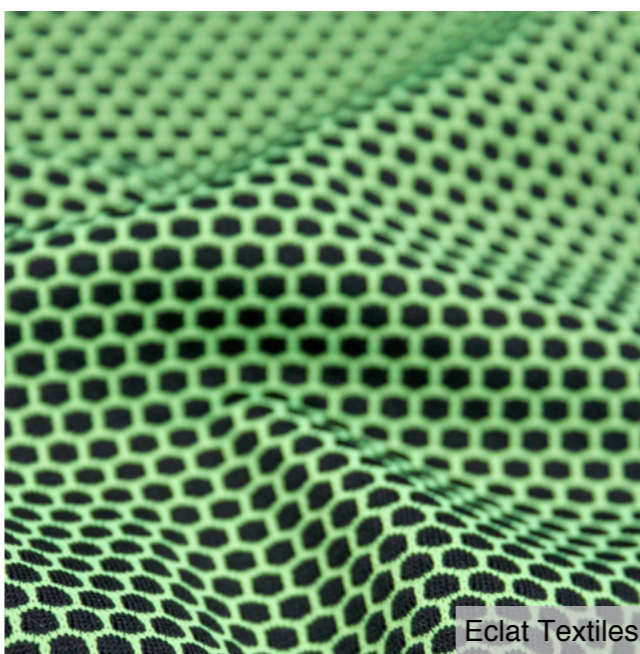




Hitex Textile



Trend Forum



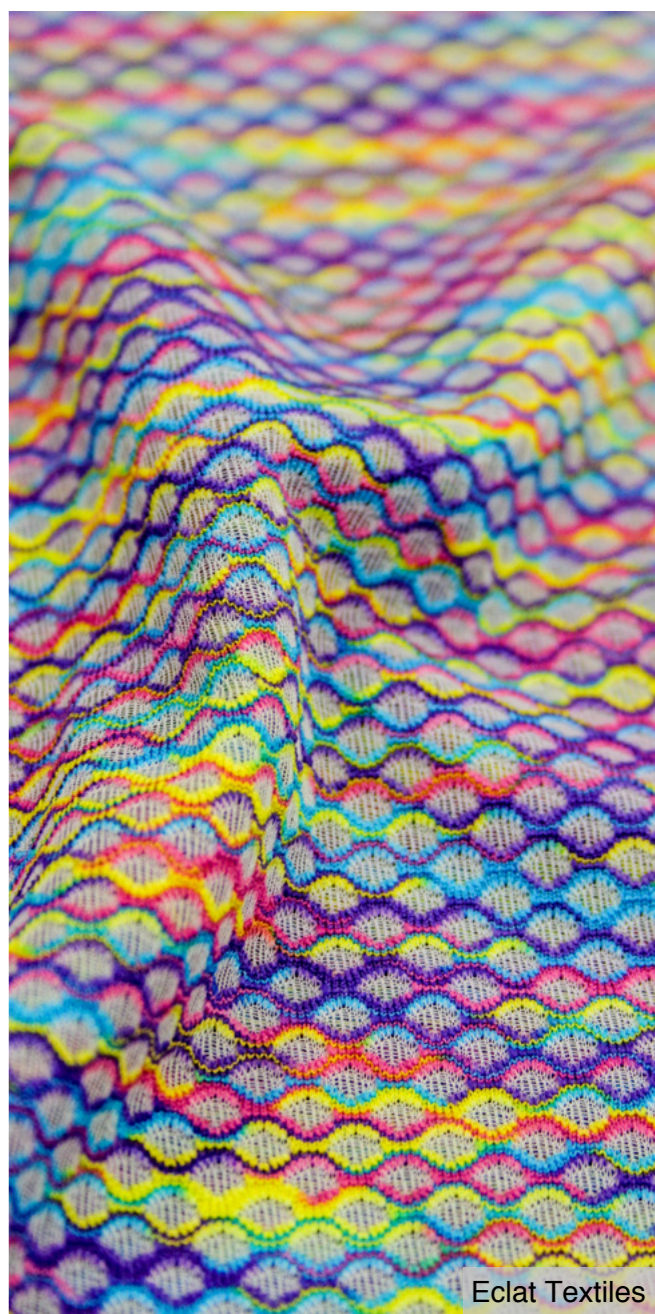
Eclat Textiles



Yalta Industrial co.



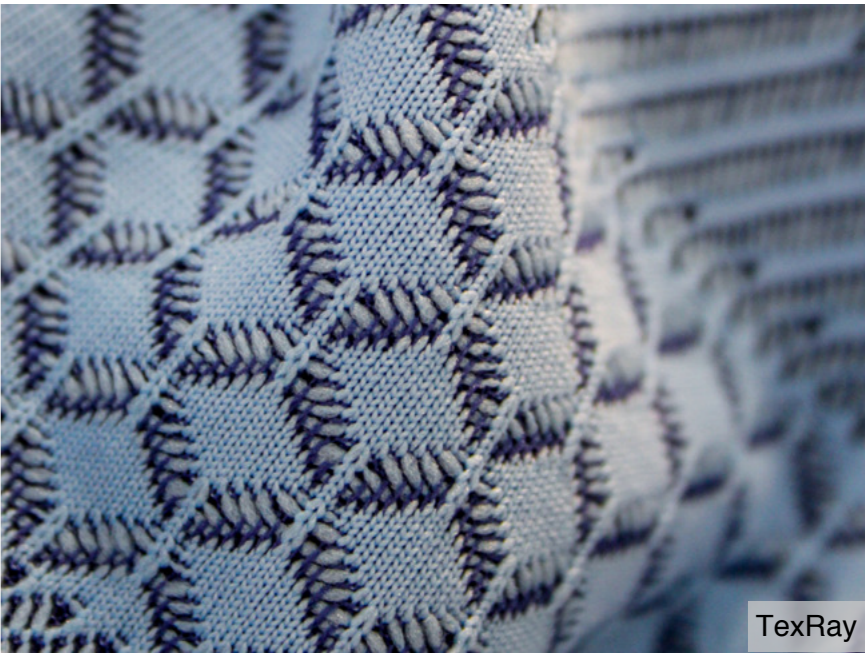
Formosa Plastic Group



Eclat Textiles

# NEON ACCENTS COLOUR

Neon strikes across all categories for AW 16/17, mixed with graphic constructions and cellular structures. Space-dyed yarns in neon brights are important for jerseys with stripes, remaining key for both technical and fashion casualwear. Cellular structures for ripstop constructions including mesh bonding are important for outerwear, adding boldness and texture to finished products.



## RETRO GEOS

PRINT & PATTERN

Bold patterns influenced by retro 1960s designs with optical effects are key in interlock and jacquard knits for AW 16/17. Additional print and heat emboss techniques heighten an illusion dimension across outerwear and active separates with a fashion twist. Raised elastic textures and embossed or padded constructions award fabrics enhanced dimension and surface interest.



Fu Hsun Fibre Industries Co Ltd



Hung's Fortune Int'nal



Trend Forum



Cosmos Textile



Cosmos Textile



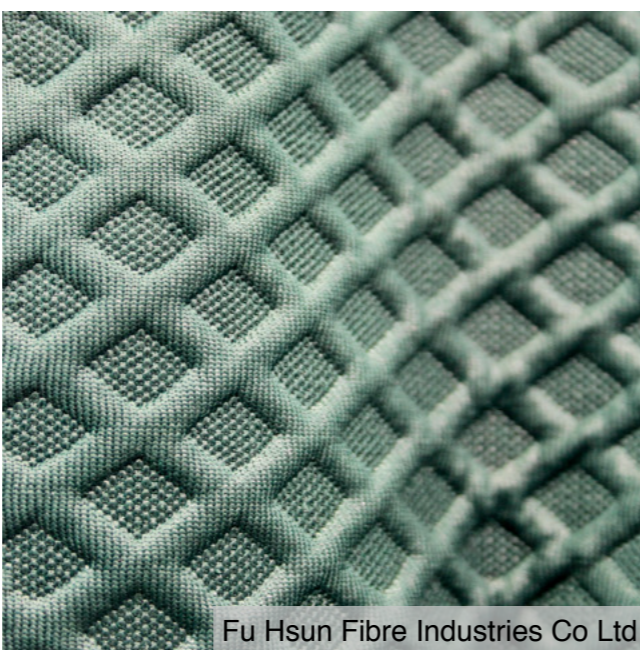
Cosmos Textile

## IRREGULAR SURFACE CONSTRUCTION

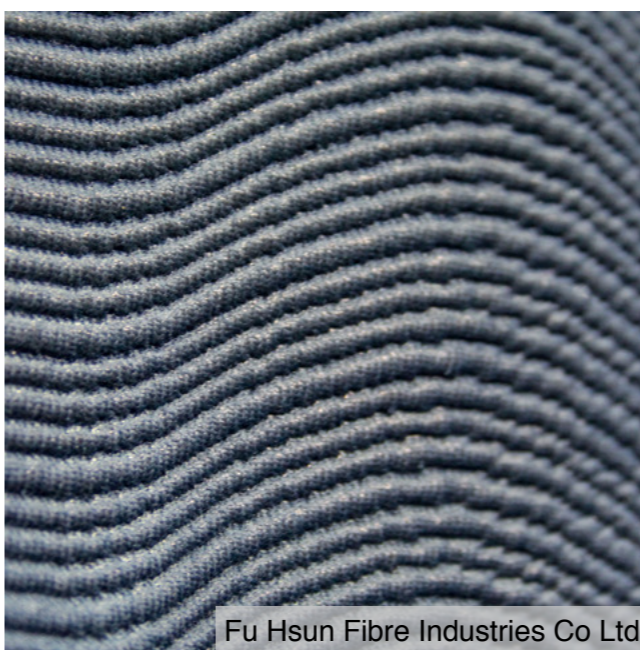
Irregular surfaces evolve for AW 16/17 with extreme texture that appears tough and robust, created through coated and puckered constructions in bonded and double-faced knits. Matte, vinyl or leather-like coatings create new looks for the season, best interpreted in black and metallic finishes.



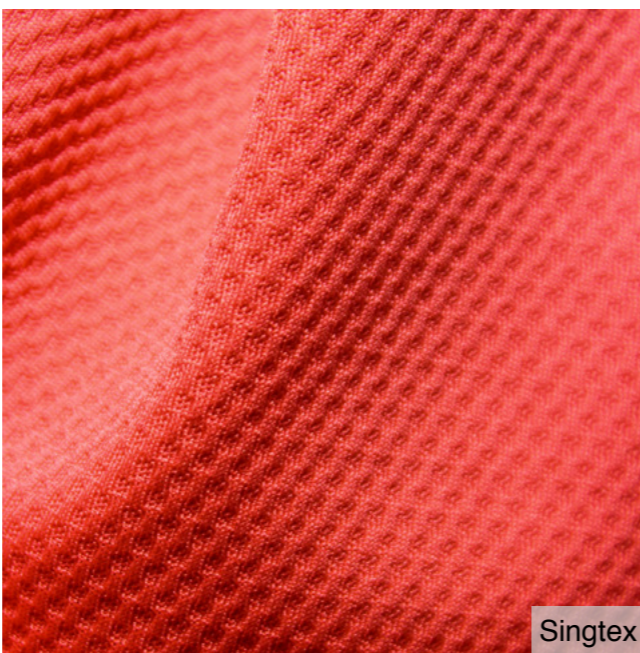
Hung's Fortune Int'nal



Fu Hsun Fibre Industries Co Ltd



Fu Hsun Fibre Industries Co Ltd



Singtex



Trend Forum



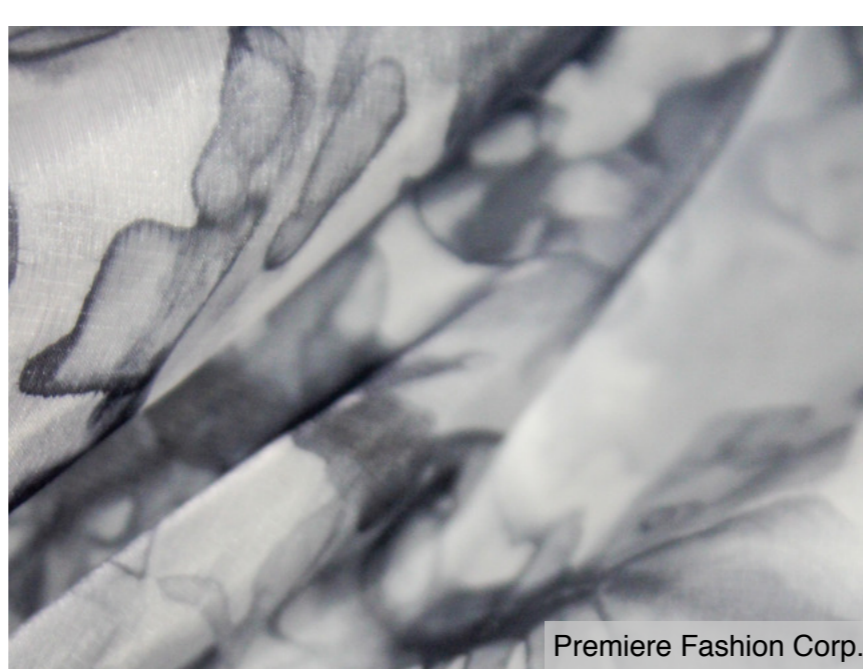
Wu Luen Knitting

## EXTRA DIMENSION CONSTRUCTION

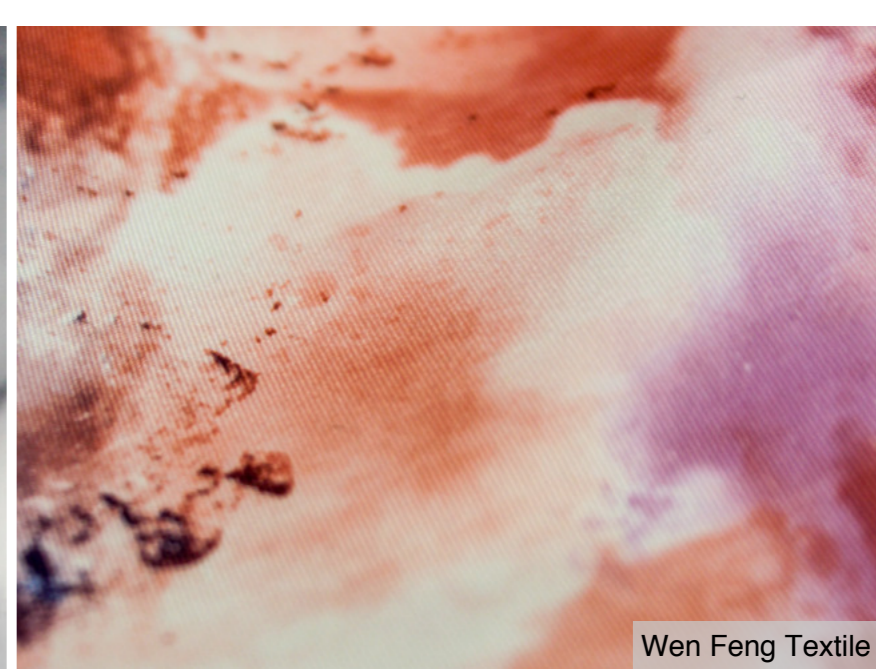
Jersey knits and jacquard weaves offer sculptural, tactile surfaces that explore volume and depth. Weaves become more structured and fancy to touch. Technical constructions for jerseys achieve rigid structures that can be both hard and soft, exploring dimensional stitches through padding and quilting as well as holding stitches.



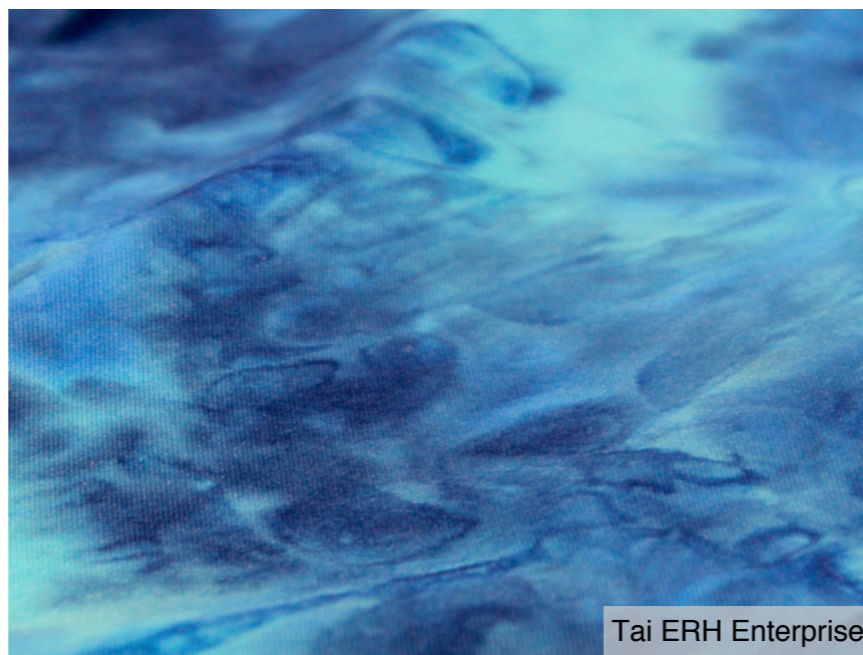
Formosa Plastic Group



Premiere Fashion Corp.



Wen Feng Textile



Tai ERH Enterprise

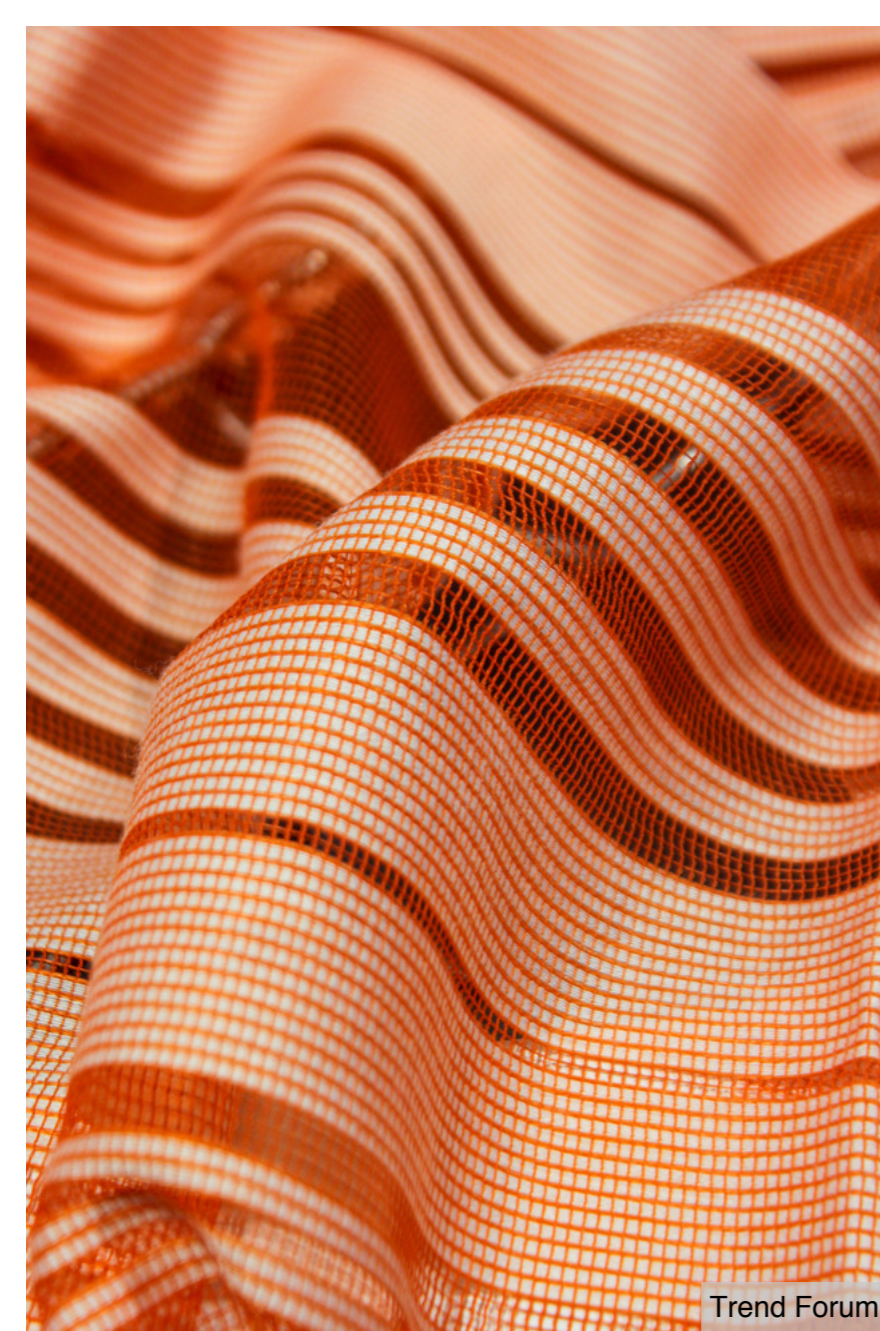


New Wide Group

# AQUATIC EXPLORATION

PRINT & PATTERN

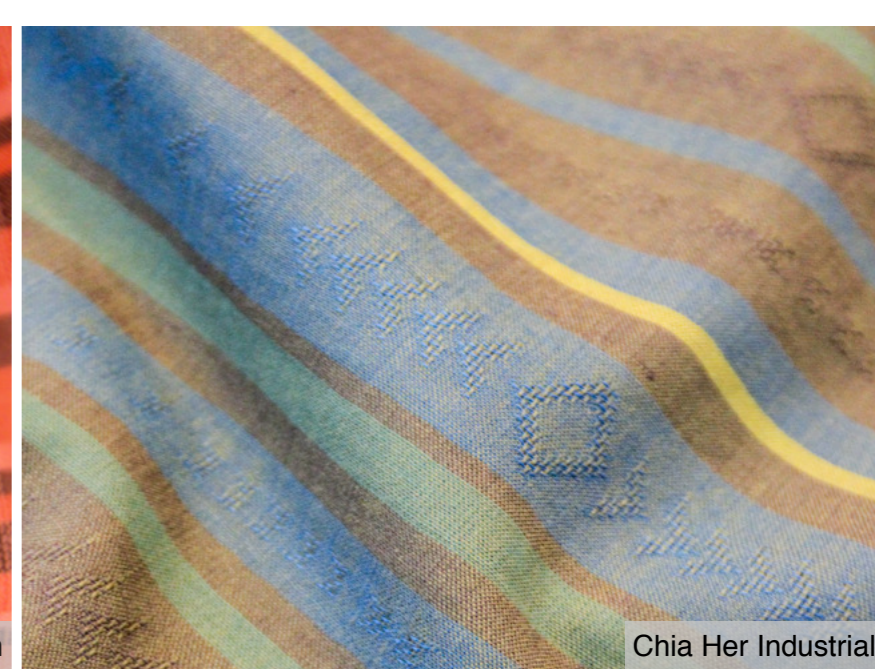
Aquatic-inspired prints are rich in colour for A/W 16/17, as layers add a hidden depth and textured fabric bases create further dimension. Suited to apparel options that can make the transition from gym to casual streetwear, lightweight jerseys are key here, alongside built-in stretch and breathable woven qualities.



Trend Forum



Solis Fabric Tech



Chia Her Industrial



Trend Forum



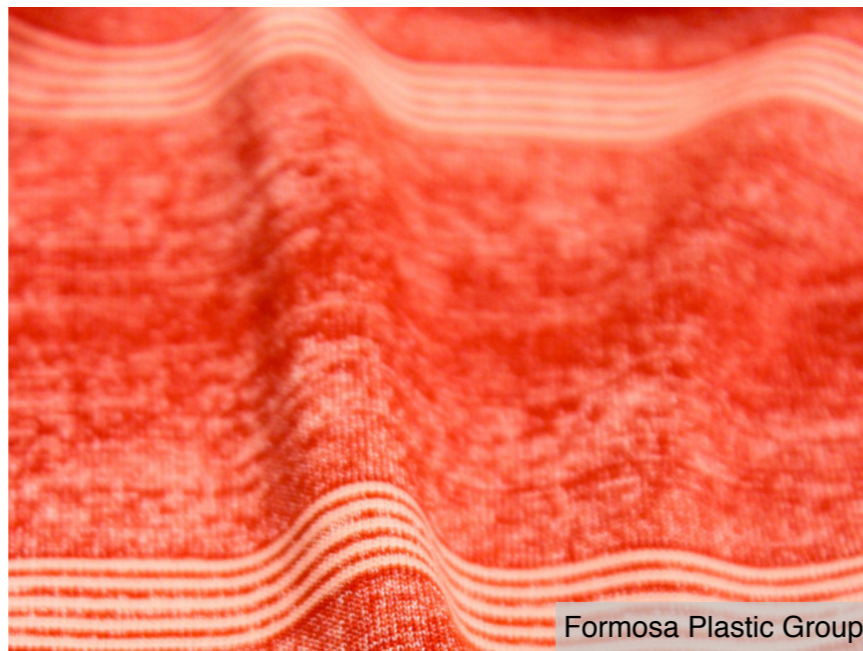
Trend Forum

## MODERN STRIPES CONSTRUCTION

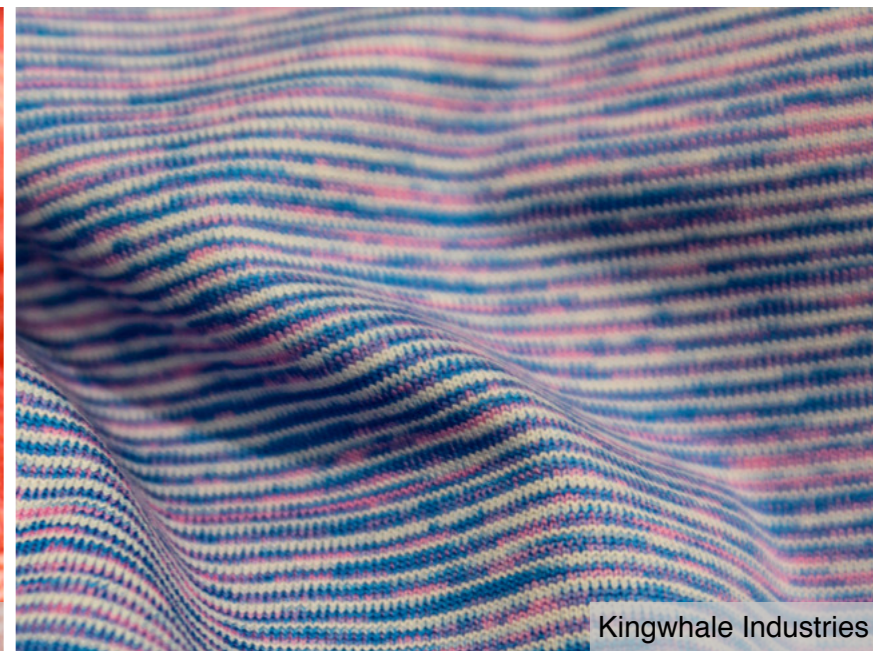
Vibrant woven and jersey stripes in varying repeats with a subtle sportswear tendency appear for A/W 16/17. Yarn-dyed stripes have semi-regular repeats, mixing fine and structured yarns together for a slight sheer effect. Mélange grey shadow stripes can work well with brighter shades for a more sober, classical interpretation of this look.



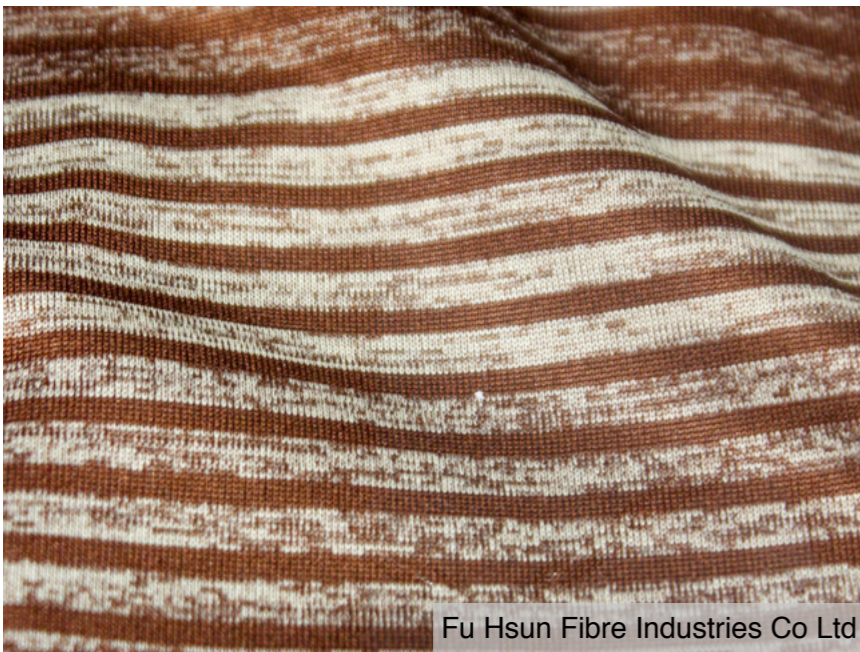
Formosa Plastic Group



Formosa Plastic Group



Kingwhale Industries



Fu Hsun Fibre Industries Co Ltd



Trend Forum



Hung's Fortune Int'l

## MARL STRIPES

FIBRE & YARN

Marl jerseys are still a key commercial area. Linear space-print and colour-mix yarns are updated with brighter colour combinations in both regular and irregular striping, sometimes using a bright shade with white for a more chalky tonal effect that can be accented by secondary shades or with reverse contrasts.



Trend Forum



New Wide Group



Grandtek Asia



New Wide Group



Trend Forum

## SPECKLED TWEED

FIBRE & YARN

Fashion and function meet in the form of weaves, jacquards and knits that are performance-friendly yet suitable for casualwear or workwear. Micro graphic textures, salt-and-pepper effects, and slub and speckled yarns create woolly, tweedy looks that are adaptable for transseasonal wear, with greys and neutrals the popular colour finishes.





Trend Forum



iFabrix Taiwan Co.



Trend Forum



Trend Forum



Trend Forum



Trend Forum

## SOFT & TACTILE FIBRE & YARN

Tactile and warm-handle touches are essential for the A/W 16/17 season, best interpreted in jerseys that encompass plush textures and brushed finishes. Bouclette, bouclé, feather, eyelash and chenille yarns are important for the season. These novelty yarns explore textures as diverse as velveteen plush, faux fur and downy, fleecy plush aspects.



Jiatay Clothing Material Store



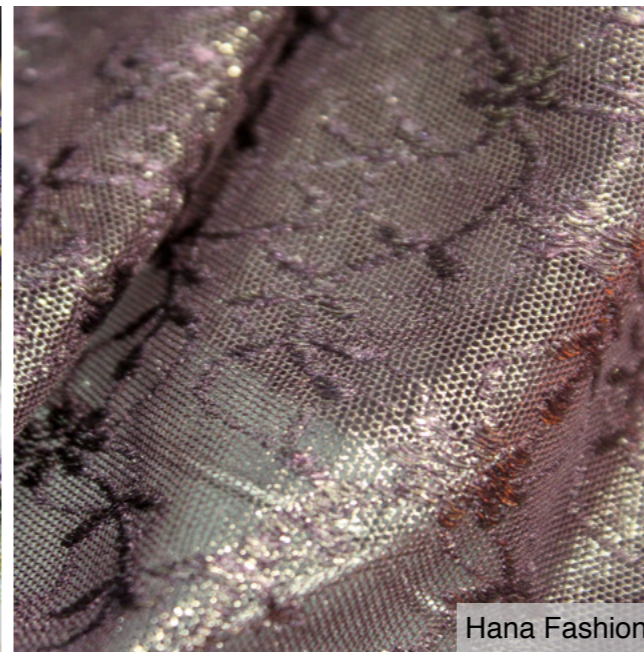
Liberty Tex



Jiatay Clothing Material Store



Liberty Tex



Hana Fashion



Liberty Tex

## RICH OPULENCE

SURFACE & FINISH

Embroideries are rich and luxurious in jewel-like tones with sheen and colour leading the way for A/W 16/17. Vintage patterns are explored and reinterpreted with an added sophistication. Applied techniques with floral imagery are combined with appliqué for texture and dimension with a more feminine and nostalgic appeal. Jacquards are rich with a metallic lustre.

# BRAND CONTACTS

Click on brand name for more images

## **Chanitex**

chanitex@chanitex.com.tw  
www.chanitex.com

## **Chia Her Industrial Co Ltd**

services@chgtex.com | www.chgtex.com

## **Chin Hsiang Shun Co Ltd**

johnny@chsco.com.tw | www.chsco.com.tw

## **Cosmos Textile**

cosmos@cosmos-tex.com.tw  
cosmos-tex.com.tw

## **Eclat Textile Co Ltd**

judy.din@eclat.com.tw | www.eclat.com.tw

## **Erictex Fashion**

service@erictex.com.tw | www.erictex.com

## **Feelwelltex Co**

feelwelltex@naver.com  
www.feelwelltex.com

## **Formosa Plastic Group**

jjlinn@fpc.com.tw

## **Fu Hsun Fibre Industries Co Ltd**

david@fuhsun.com | www.fuhsun.com

## **Grandetex Development**

eric@grandetex.com.tw  
www.grandetex.com.tw

## **Hana Fashion**

hana07@hana-fashion.com.tw  
www.hana-fashion.com.tw

## **Hansol Eco Corporation**

han0680@naver.com | www.i-hansol.co.kr

## **Hindseltex Industrial**

vicky@hst.com.tw | www.hst.com.tw

## **Hitex Textile Co Ltd**

cathy@hitex-group.com  
www.hitex-group.com.tw

## **Honmyue Enterprise**

zhuxi@honmyue.com.tw  
www.textile-hy.com.tw

## **Hung's Fortune International Co Ltd**

service@hungs.com.tw  
www.hungsfortune.com.tw

## **Ifabrix Taiwan**

henry.lin@ifabrix.con.tw | www.ifabrix.com.tw

## **Jerng Yuan Industrial Co Ltd**

peter@jerngyuan.com  
www.jerngyuan.com

## **Jiatay Clothing Material Store**

jiataylace@yahoo.com.tw

## **King Max Textile**

cy@95tex.com | www.95tex.com

## **Lee Fang Enterprise**

leefang.tw@msa.hinet.net

## **Liberty Tex Co Ltd**

sales@libertytex.com  
www.libertytex.com



# BRAND CONTACTS

Click on brand name for more images



Kingwhale Industries

**Li Peng Enterprise Co Ltd**

[marketing@libolon.com](mailto:marketing@libolon.com) | [www.libolon.com](http://www.libolon.com)

**Long Bow Co Ltd**

[tiffany.yah@longbow.com.tw](mailto:tiffany.yah@longbow.com.tw)

**Loongchin Textile Co Ltd**

[service@loongchin.tw](mailto:service@loongchin.tw)

**Microlite Industrial Co**

[microlite-tw@hotmail.com](mailto:microlite-tw@hotmail.com) | [www.microlite.com.tw](http://www.microlite.com.tw)

**New Wide Group**

[kevin.ho@newwide.com](mailto:kevin.ho@newwide.com) | [www.newwide.com](http://www.newwide.com)

**Premiere Fashion Corp**

[alicia@premiere1.com.tw](mailto:alicia@premiere1.com.tw) | [www.premiere1.com.tw](http://www.premiere1.com.tw)

**R&D Textile Co Ltd**

[sales@rndtextile.co.kr](mailto:sales@rndtextile.co.kr) | [rndtextile.en.ec21.com](http://rndtextile.en.ec21.com)

**Sam Young Textile**

[gp0714@naver.com](mailto:gp0714@naver.com)

**Sheico Group**

[jack\\_wang@sheico.com.tw](mailto:jack_wang@sheico.com.tw) | [www.sheico.com](http://www.sheico.com)

**Singtex Industrial Co Ltd**

[sales@singtex.com](mailto:sales@singtex.com) | [www.singtex.com](http://www.singtex.com)

**Solis Fabric Technology**

[helena@solistex.com](mailto:helena@solistex.com) | [www.solistex.com](http://www.solistex.com)

**Sunny Special Dyeing & Finishing Co Ltd**

[jeffrey@sunnytex.com.tw](mailto:jeffrey@sunnytex.com.tw)

**Sympatex Technologies-Plouquet**

[pinny.xie@sympatex.com](mailto:pinny.xie@sympatex.com) | [www.sympatex-asia.com](http://www.sympatex-asia.com)

**Tai ERH Enterprise**

[globalsales@taierh.com.tw](mailto:globalsales@taierh.com.tw) | [www.taierh.com.tw](http://www.taierh.com.tw)

**T&A Textile Co Ltd**

[tomlin2007tw@gmail.com](mailto:tomlin2007tw@gmail.com)

**Tri Ocean Textile**

[service@triocean.com.tw](mailto:service@triocean.com.tw) | [www.triocean.com.tw](http://www.triocean.com.tw)

**Wen Feng Textile**

[nico@wen-feng.com.tw](mailto:nico@wen-feng.com.tw) | [www.wen-feng.com.tw](http://www.wen-feng.com.tw)

**Wu Luen Knitting Co**

[sales@wu-luen.com.tw](mailto:sales@wu-luen.com.tw) | [www.wu-luen.com.tw](http://www.wu-luen.com.tw)

**Yalta Industrial Co**

[yalta@ms7.hinet.net](mailto:yalta@ms7.hinet.net)

**Yen Shin Gee Enterprise**

[ysg2299@ms35.hinet.net](mailto:ysg2299@ms35.hinet.net)

**Yuanling Knitting Industrial Co Ltd**

[jane@yuanling.com.tw](mailto:jane@yuanling.com.tw) | [www.yuanling.com.tw](http://www.yuanling.com.tw)